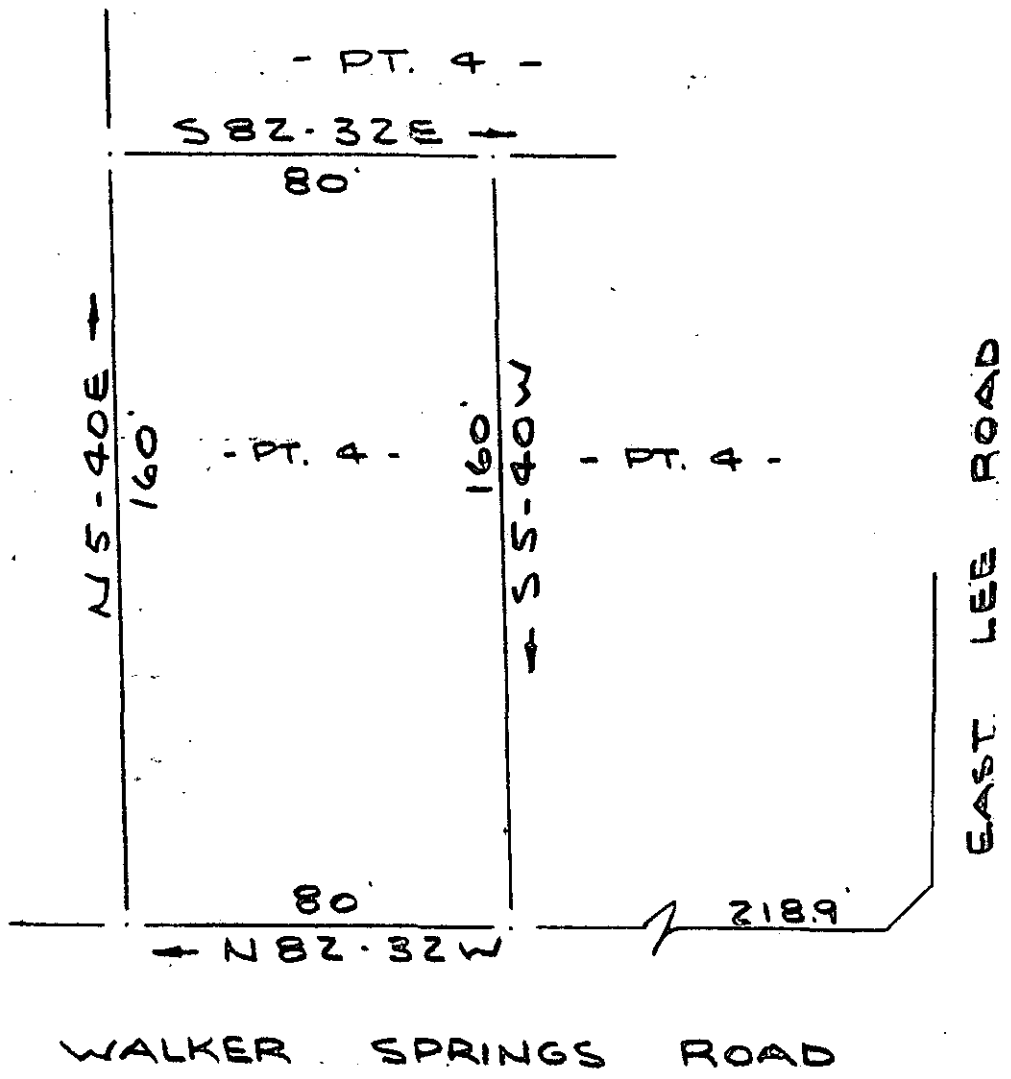


141
MICROFILMED

FILED
GREENVILLE CO. S. C.
OCT 25 9 49 AM '76
DANNIE S. TANKERSLEY
R.M.C.



SURVEY FOR
W. N. LESLIE, INC.
NEAR GREENVILLE, S.C.
SCALE 1" = 40' 14 OCT 1976

THIS PLAT IS NOT A SUBDIVISION
AS DEFINED BY THE GREENVILLE
COUNTY SUBDIVISION REGULATIONS.

10/21/76 *James T. Miller*
Chairman, Secretary, or Director of
Planning.
Greenville County Planning Commission

②
11316

R. B. Bruce OCT 25 '76
R. B. Bruce, RLS #1952

5w-48

5 OCT 25 1976

1.00 M

CAROLINA SURVEYING CO.
112 MANLY ST.
GREENVILLE, S.C.
PT. T32-1-1